



LIFE21-NAT-IT-LIFE
GOPROFOR MED
101074738

PRESERVING AND MANAGING FOREST HABITATS IN THE MEDITERRANEAN AREA

WORKSHOP - MONDAY DECEMBER 4, 2023



Co-funded by
the European Union

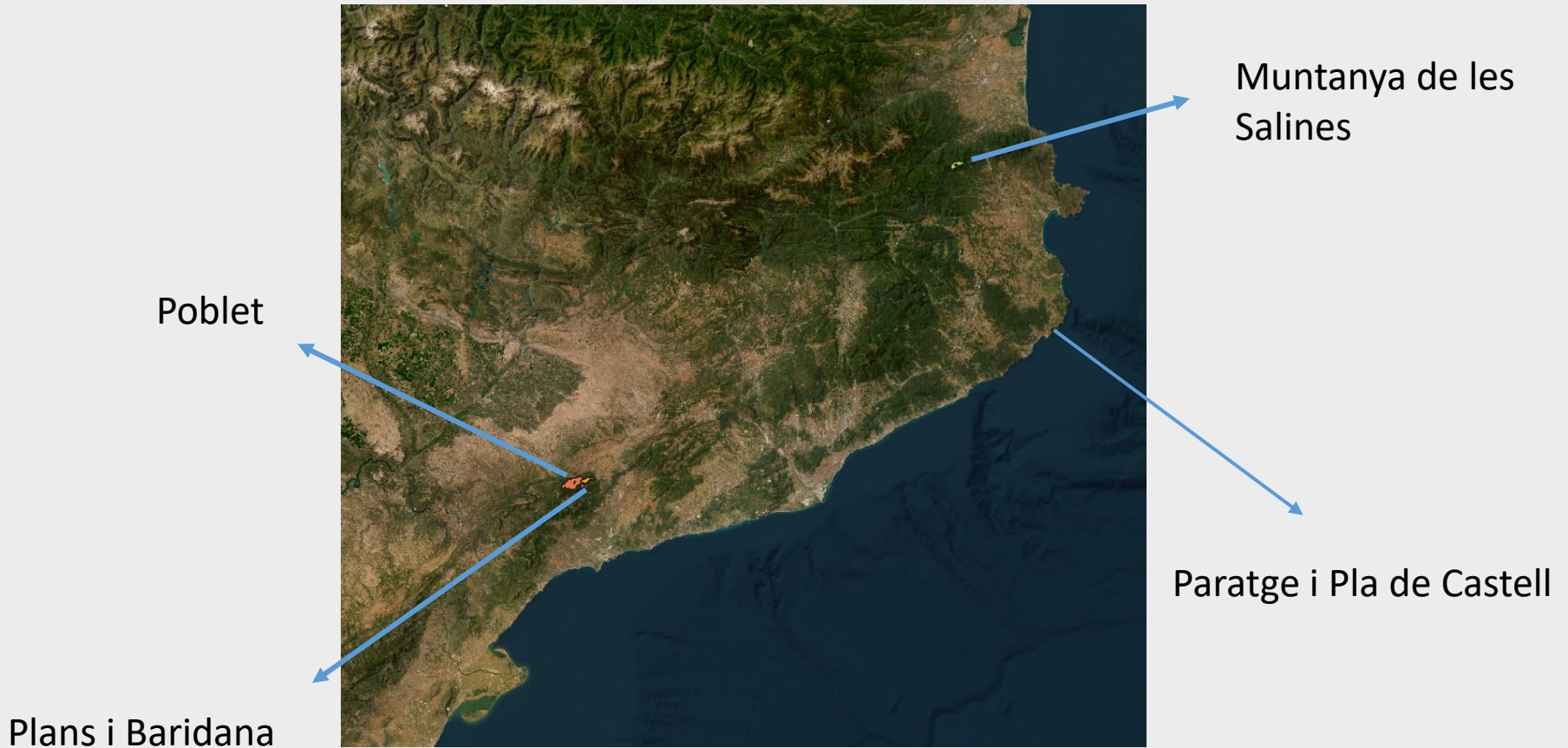


Application in Catalan sites

MAR PALLARÉS AND MARIO
BELTRÁN (CTFC)



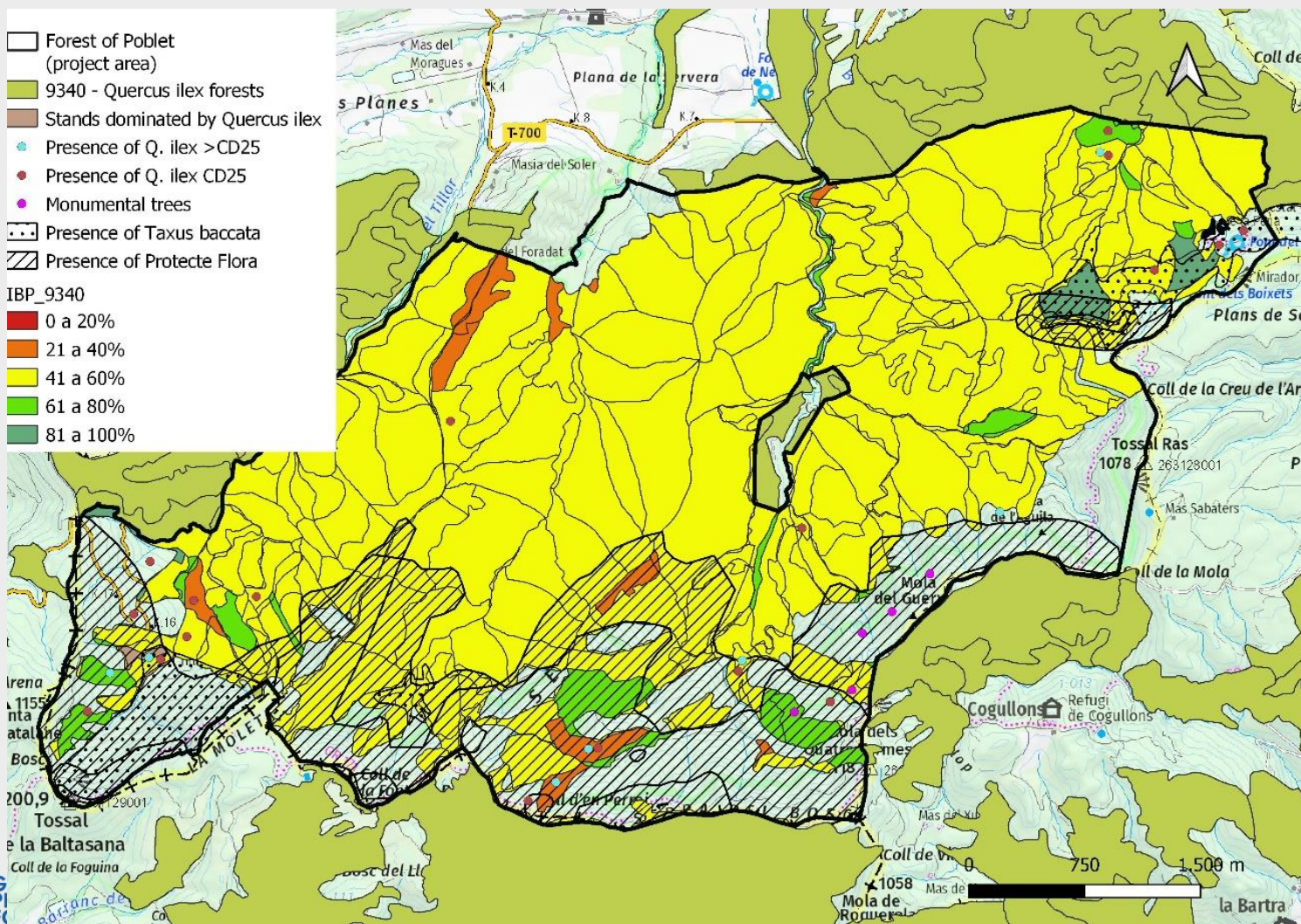
Catalan sites



Poblet - Description

Quercus ilex – Habitat 9340 → 13.248 ha Natura 2000 - **1.681 ha within Poblet**

Management Plan approved on April, 2021.



Poblet – Ecological Network

Quercus ilex – Habitat 9340 → Project area: **483,1 hectares**

Core area: 3 – 18,7 ha (3,9%)

IoS: 7 – 25,1 ha (5,2%)

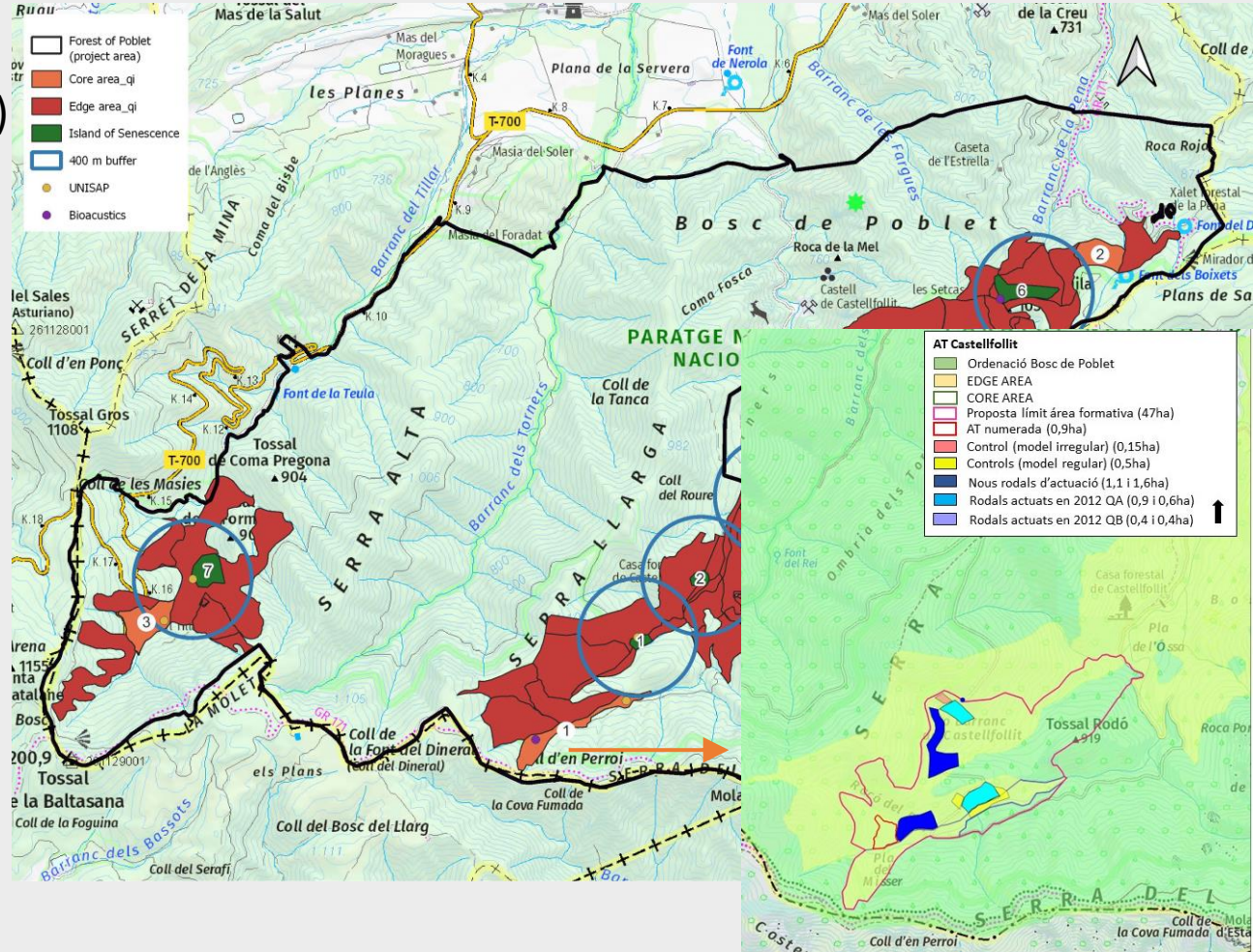
Edge area: 464,3 ha (90,9%)

Characterised surface:

UNISAP inventories

IoS survey:

January 2024



Poblet – Core areas



CD>25,

ora

AY DECEMBER 4, 2023

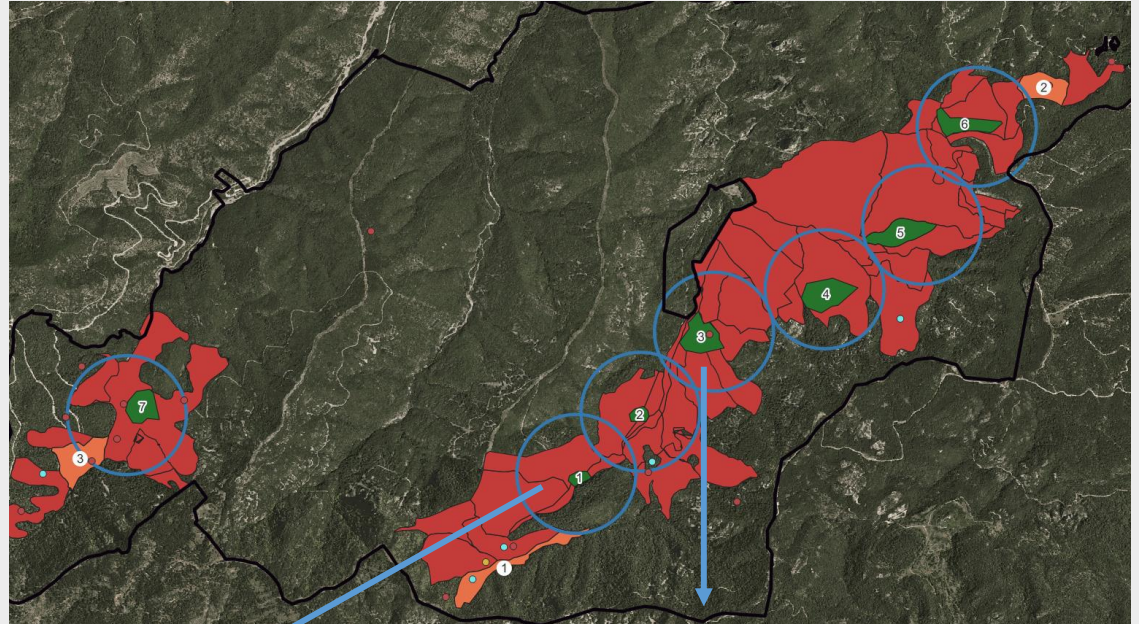
Poblet – Islands of Senescence

400m buffer

Huge variability

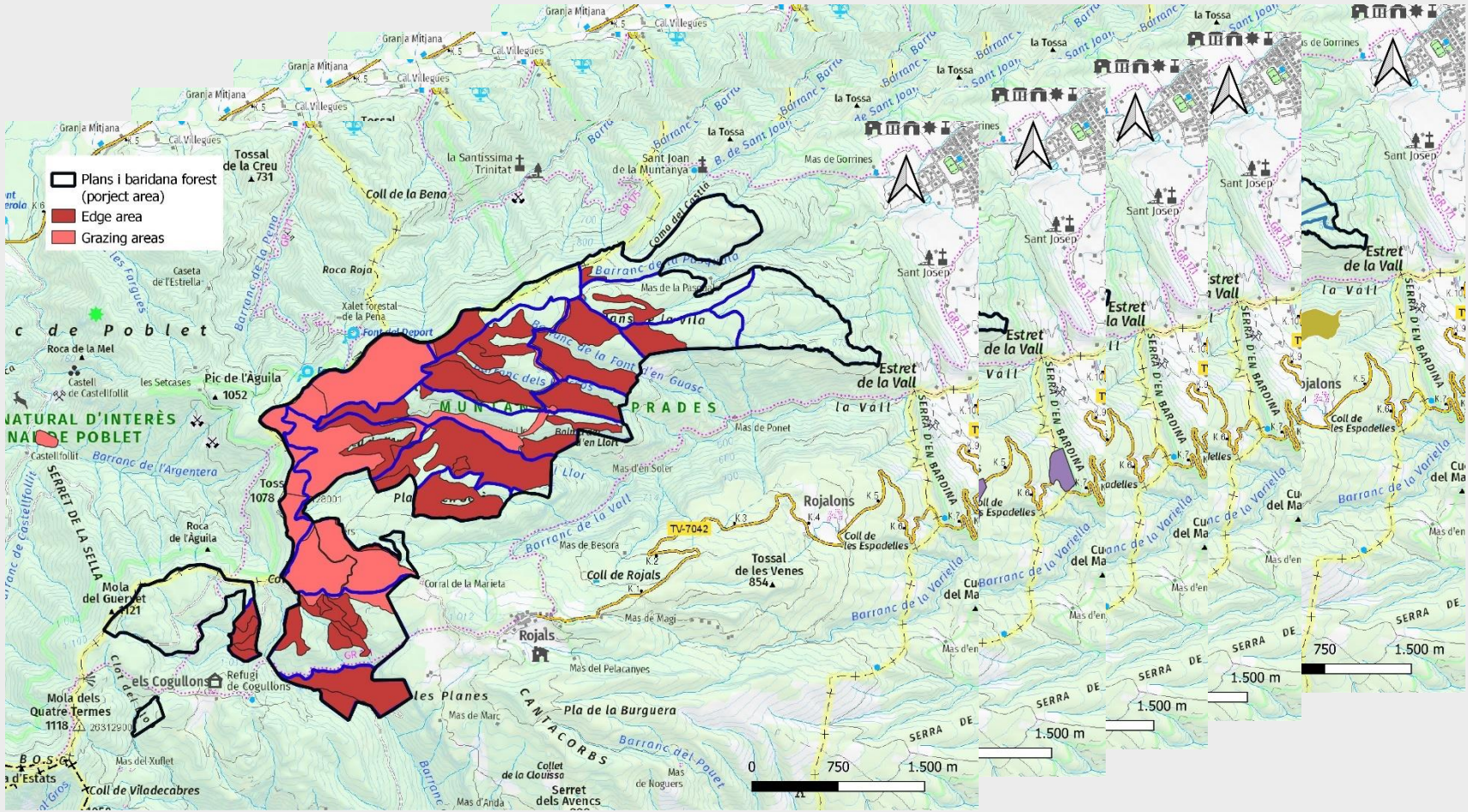
Areas with great potential

Actions in the FMP



Plans i Baridana - Description

Pinus nigra – Habitat 9530 → 2.131 ha Natura 2000 – **188,1 ha within Plans i B.**



Plans i Baridana – Ecological Network

Pinus nigra – Habitat 9530 → Project area: **402,5 hectares**

Core area: 2 – 16,5 ha (4,1%)

IoS: 9 – 22,8 ha (5,7%)

Edge area: 385,9 ha (90,2%)

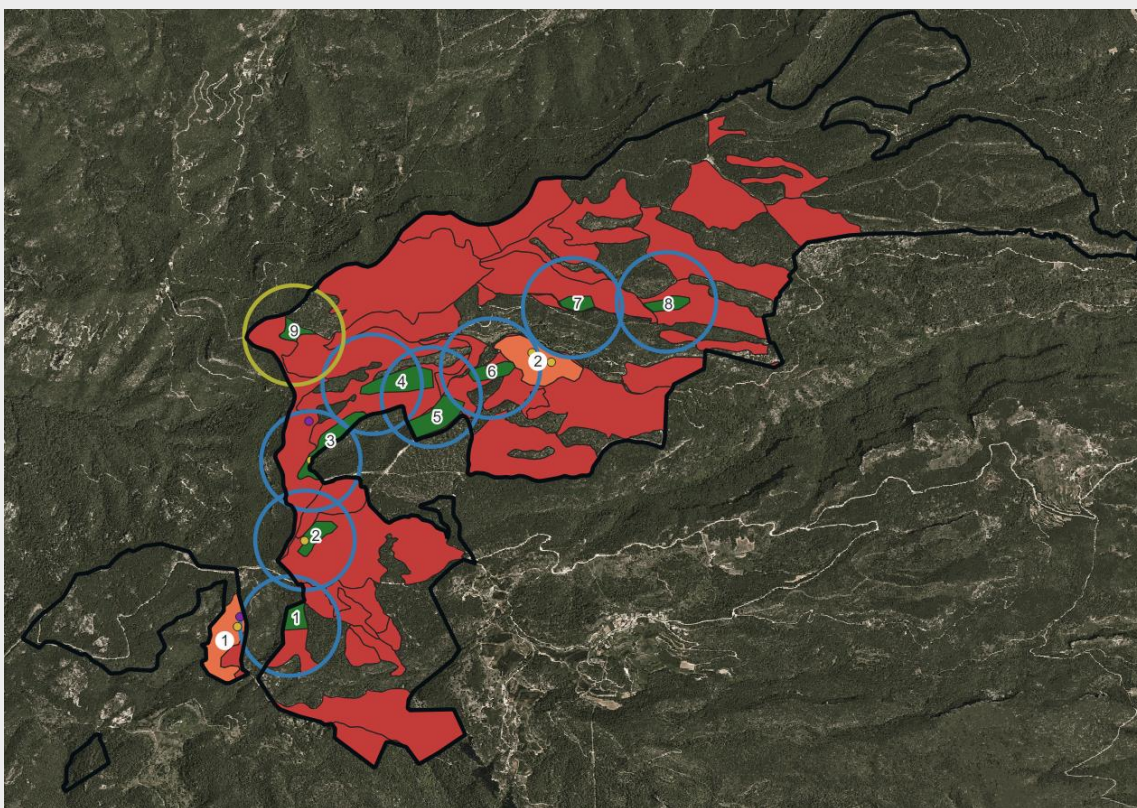
Characterised surface:

UNISAP inventories

IoS survey:

January 2024

Task 3.2



Plans i Baridana – Core areas

Dg = CD40

No fire nor grazing



D
N

Plans i Baridana – Islands of Senescence

300m buffer

Homogeneous structure

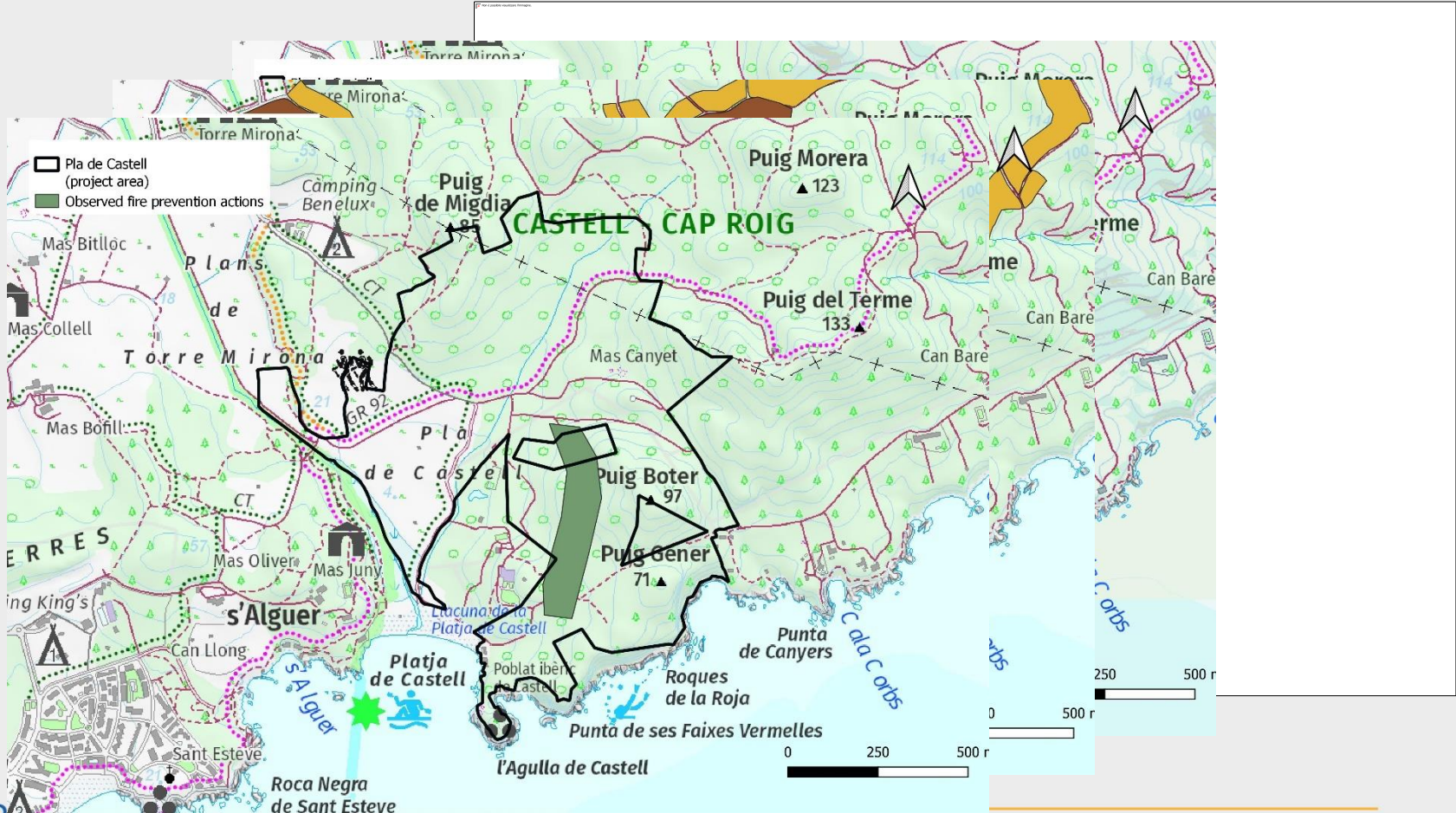
Pure stands or mixed (*P. sylvestris*, *Q. ilex*)



Paratge i Pla de Castell – Description

Quercus suber – Habitat 9330 → 275 ha Natura 2000 – **62,7 ha within Paratge**

Management Plan being revised



Paratge i Pla de Castell – Ecological Network

Quercus suber – Habitat 9330 → Project area: **63,5 hectares**

Core area: 1 – 5,4 ha (8,5%)

IoS: 3 – 3,5 ha (5,5%)

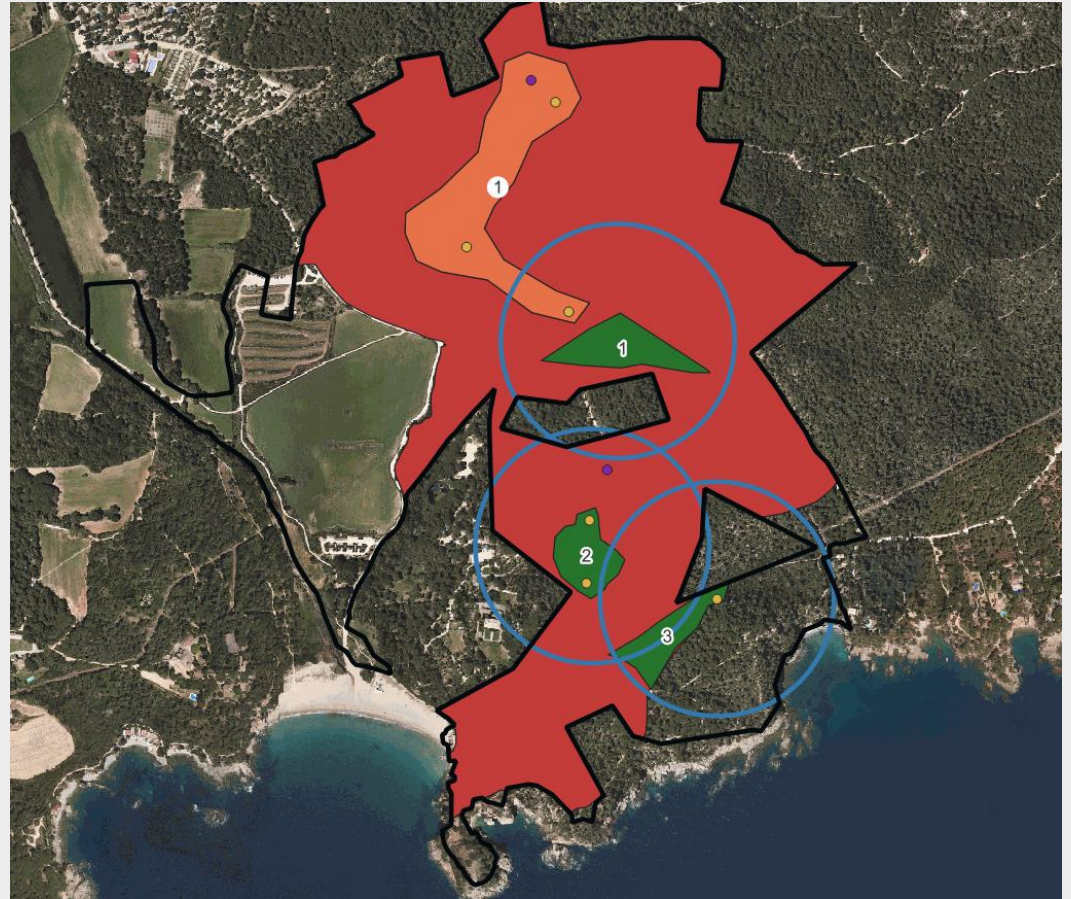
Edge area: 58,1 ha (86%)

Characterised surface:

UNISAP inventories

IoS survey:

February - March 2024

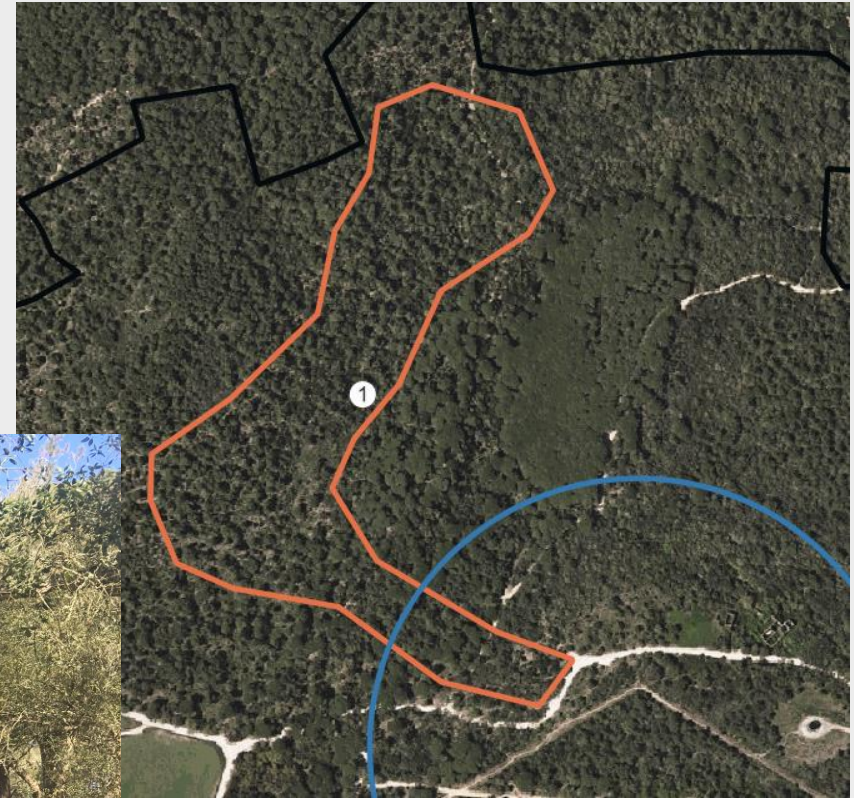


Paratge i Pla de Castell – Core area

Best *Quercus suber* site

Potential grazing area

No fire prevention



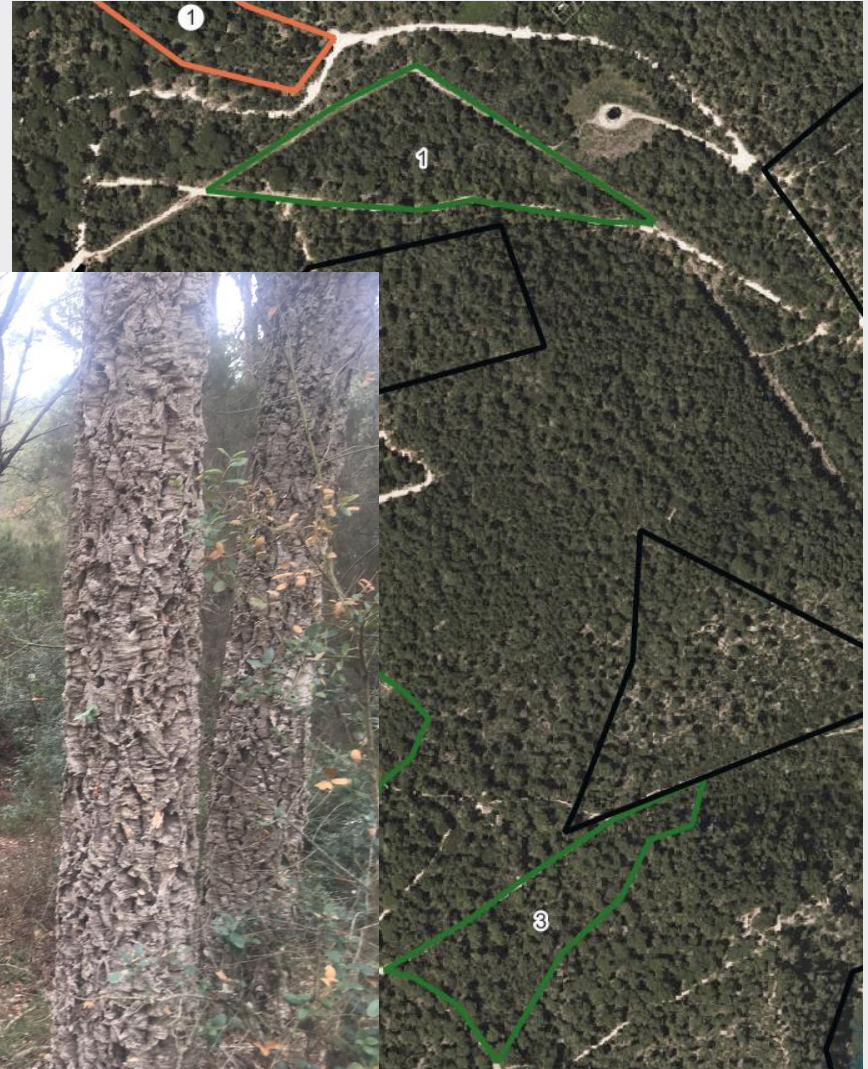
Paratge i Pla de Castell – Islands of Senescence

Huge potential for improvement

Very mixed with *Pinus halepensis*

Som

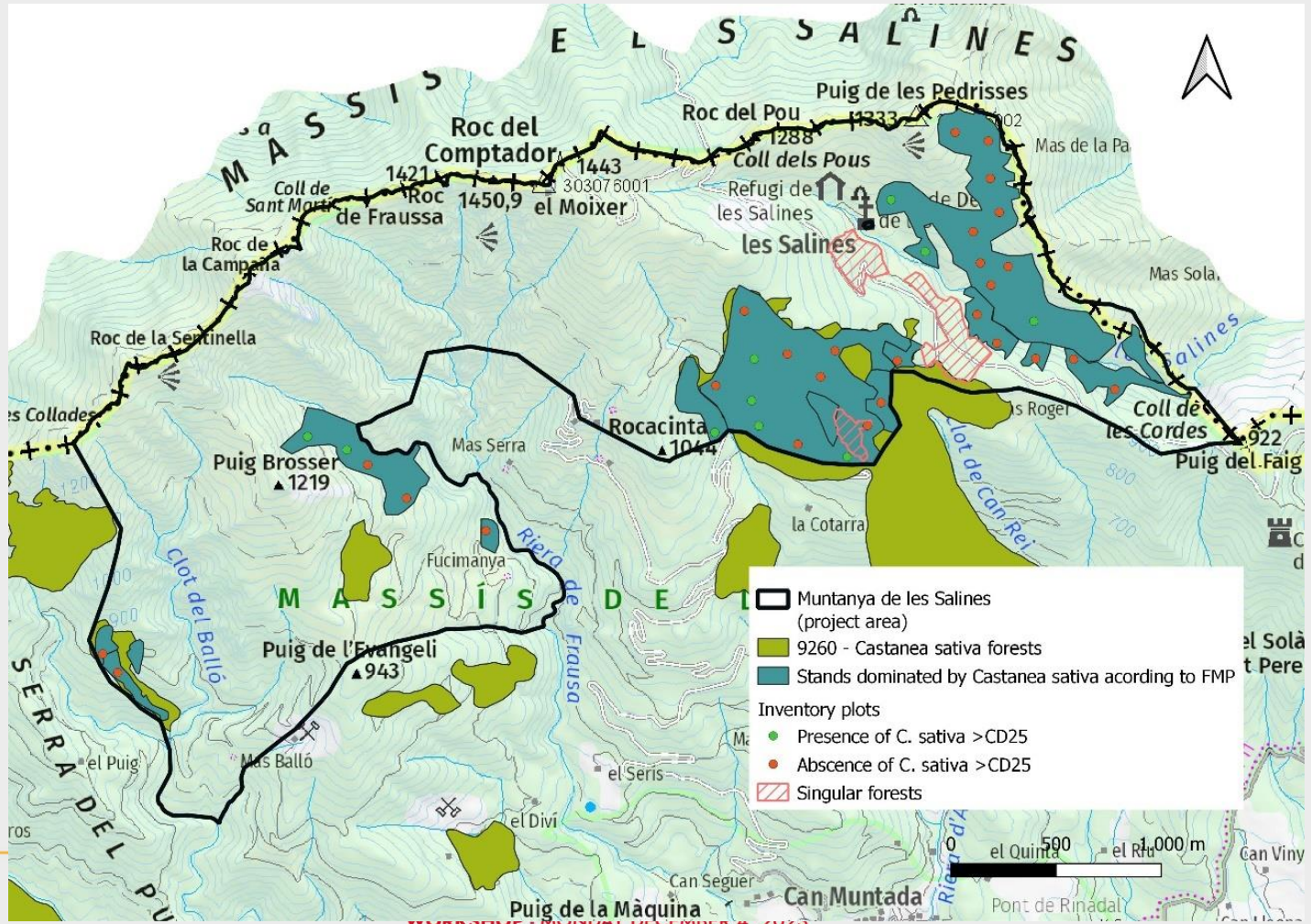
No c



Muntanya de les Salines - Description

Castanea sativa – Habitat 9260 → 462 ha Natura 2000 – **74,1 ha within Salines**

Management Plan being revised



Muntanya de les Salines – Ecological Network

Castanea sativa – Habitat 9260 → Project area: **156,3 hectares**

Core area: 3 – 17,9 ha (11,5%)

IoS: 5 – 17,1 ha (19,9%)

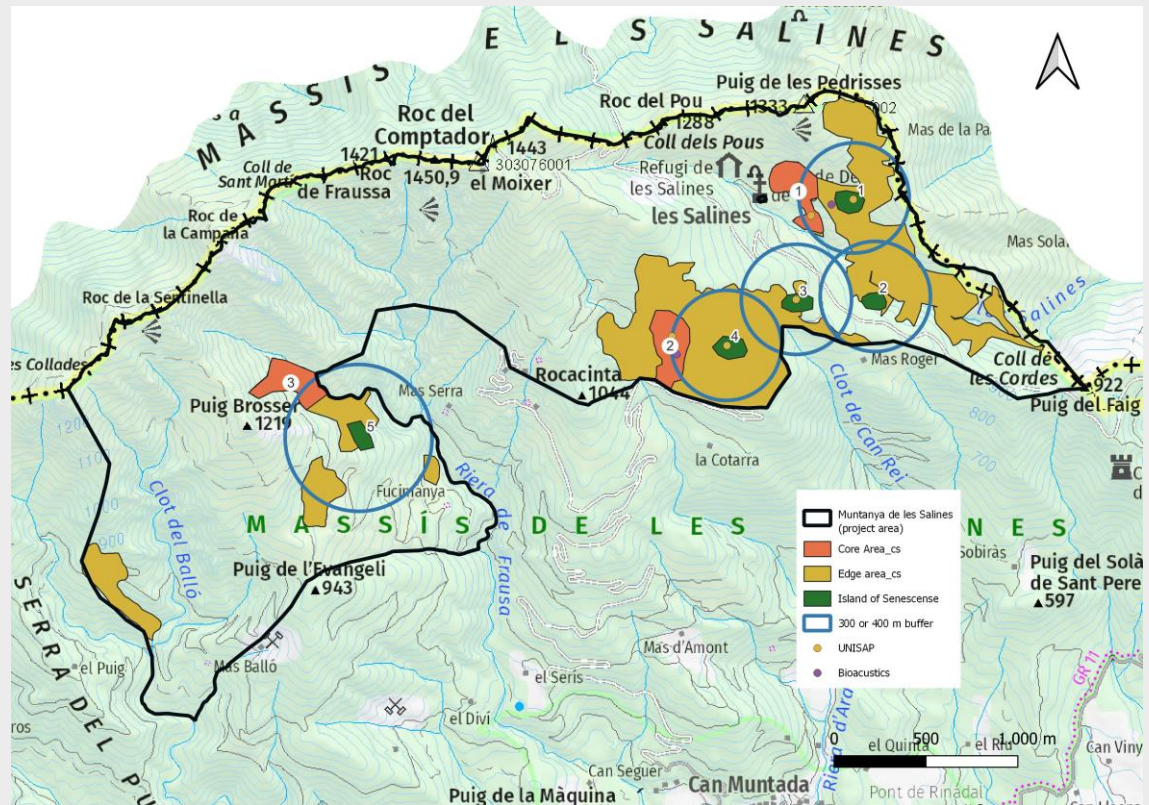
Edge area: 121,3 ha (77,6%)

Characterised surface:

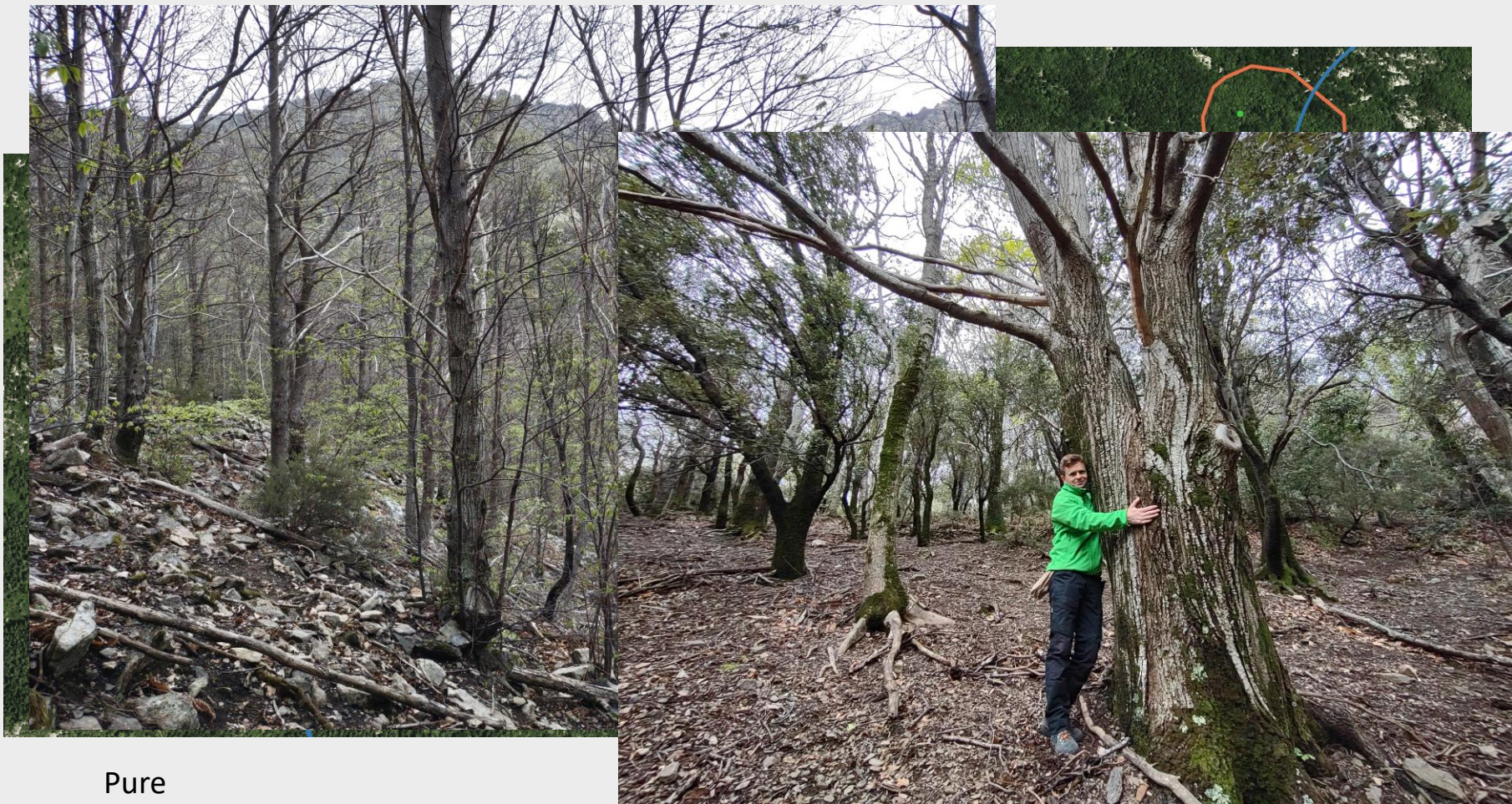
UNISAP inventories

IoS survey:

March 2024



Muntanya de les Salines – Core areas



Pure

Muntanya de les Salines – Islands of Senescence

300m buffer





LIFE21-NAT-IT-LIFE
GOPROFOR MED
101074738

PRESERVING AND MANAGING FOREST HABITATS IN THE MEDITERRANEAN AREA

WORKSHOP - MONDAY DECEMBER 4, 2023



Co-funded by
the European Union



Thank you!

