



LIFE21-NAT-IT-LIFE
GOPROFOR MED
101074738

PRESERVING AND MANAGING FOREST HABITATS IN THE MEDITERRANEAN AREA

WORKSHOP - MONDAY DECEMBER 4, 2023



Co-funded by
the European Union

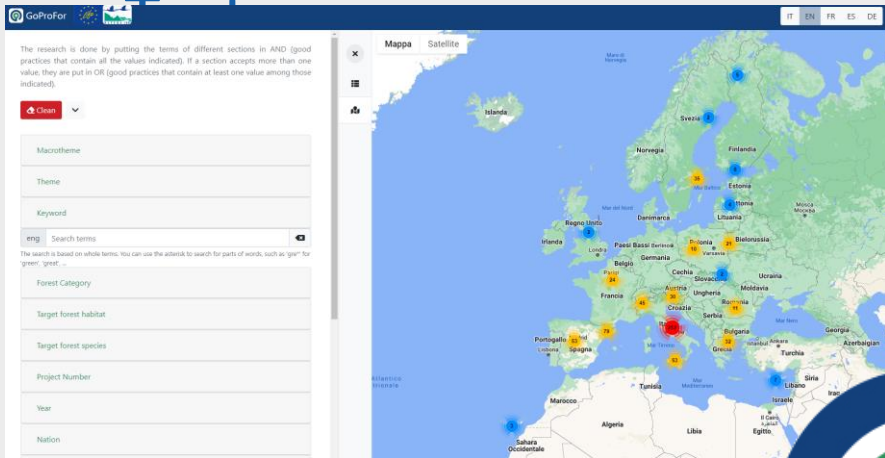


LIFE GoProForMED

MARCELLO MIOZZO (D.R.E.AM. ITALIA)



GoProFor – DBASE Good Practices

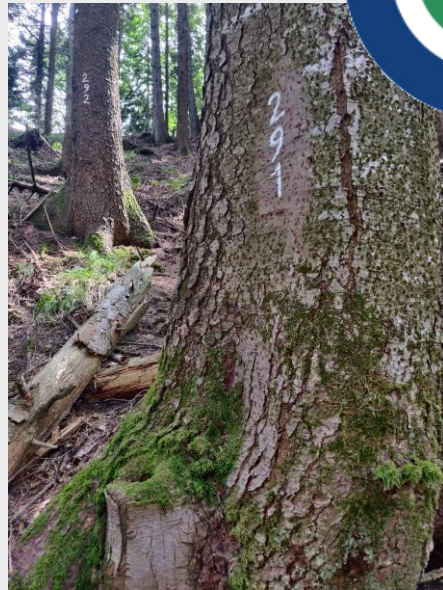


GoProFor – Training



LIFE GoProFor,
 LIFE Biorgest,
 LIFE ForestLIFE,
 LIFE Climark,
 LIFE Manfor CBD,
 LIFE SPAN,
 LIFE Mixforchange,
 LIFE Pprospot,
 LIFE Summacop
 COSTS Action Bottoms-up, building
 capacity for Natura 2000 foresters

GoProFor – Network IT Martelloscope



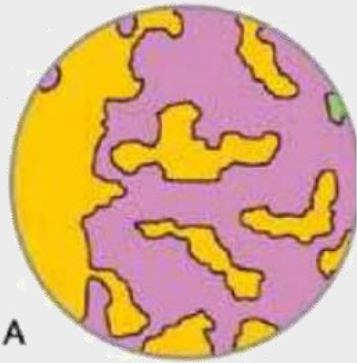
Conservation status of a habitat according to the Habitats Directive (Directive 92/43/EEC)

The "conservation status" of a natural habitat will be taken as "favourable" when:

- its natural range and areas it covers within that range are stable or increasing,
- **the specific structure and functions which are necessary for its long-term maintenance exist and are likely to continue to exist for the foreseeable future**
- the conservation status of its typical species is favourable as defined in (i)



The effectiveness and progress in forest biodiversity conservation heavily depend on an appropriate and complementary use of integrative and segregative conservation instruments

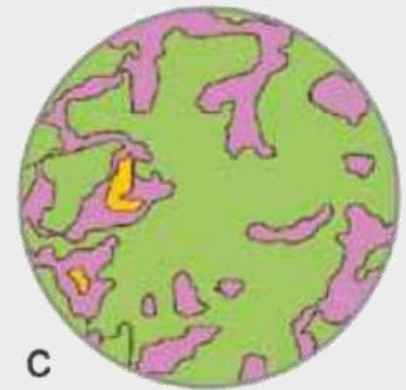


SEGREGATIVE INSTRUMENTS

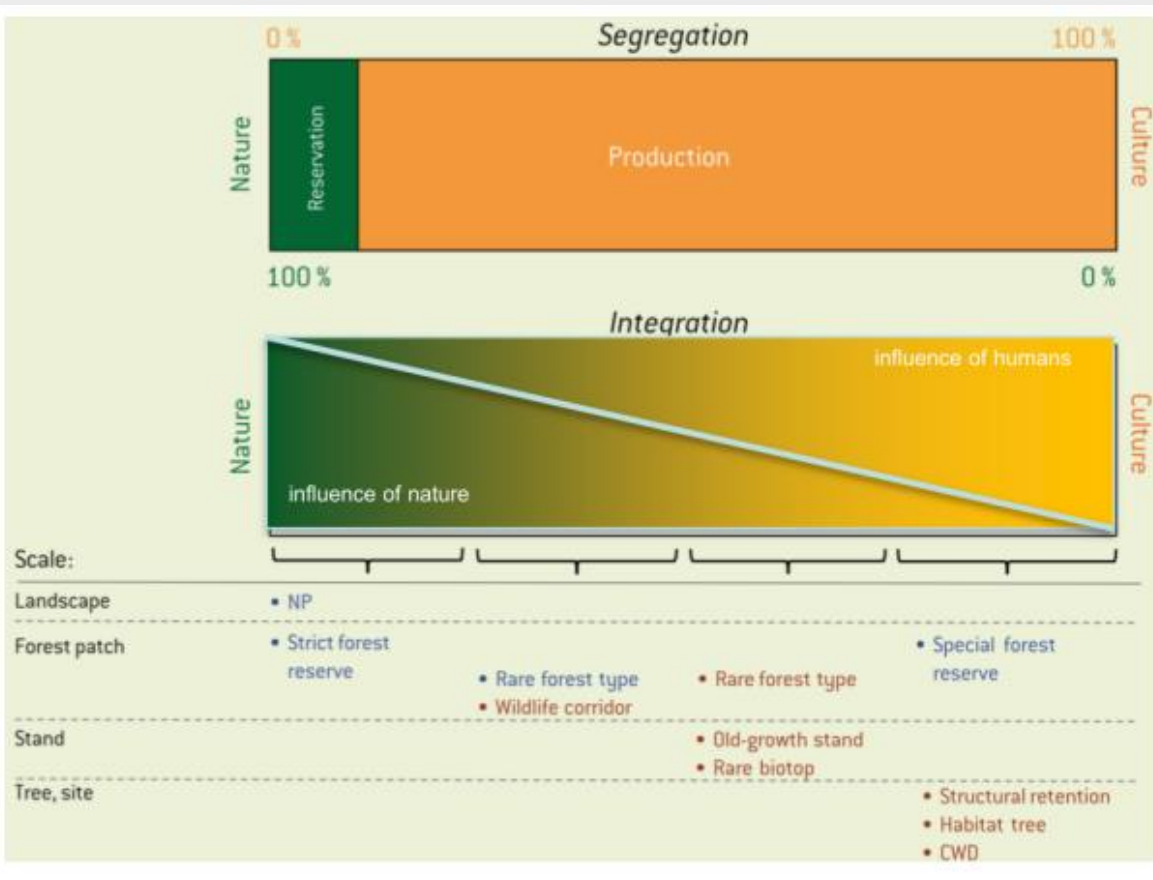
Instruments focused on conservation and natural dynamics at large scale (Forest Reserves, National Parks, etc.)

INTEGRATIVE INSTRUMENTS

Instruments focused on conservation and restoration at small scale (structural heterogeneity, long rotation cycles, habitat trees, etc.)



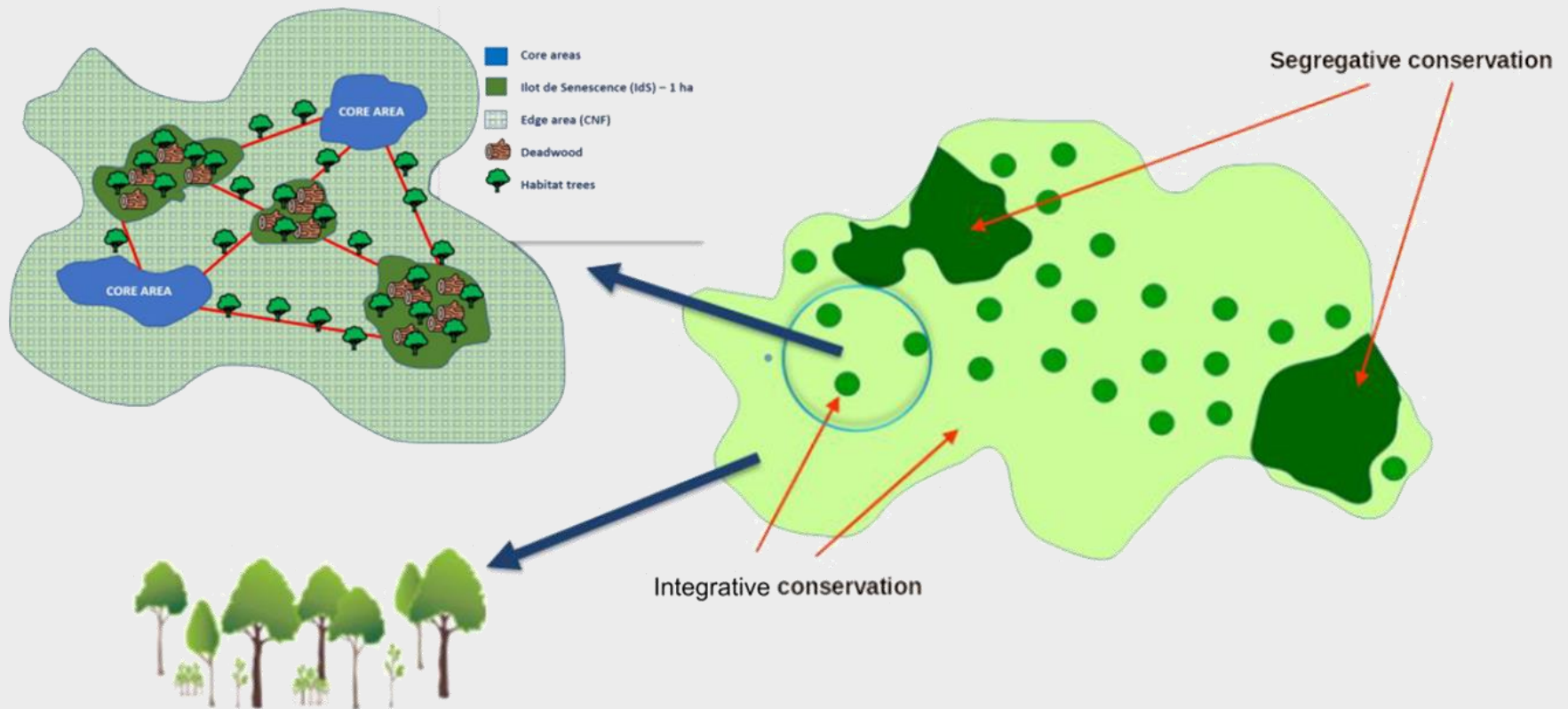
To preserve the multitude of different niches and processes in forest habitats, various conservation tools are needed



Optimized integrative system

In an optimized integrative system, small-scale conservation measures (red) are combined with segregative tools (blue)

Forest management models at stand and site scale find their integration with the planning of an ecological network, combined with indicator-based retention forestry

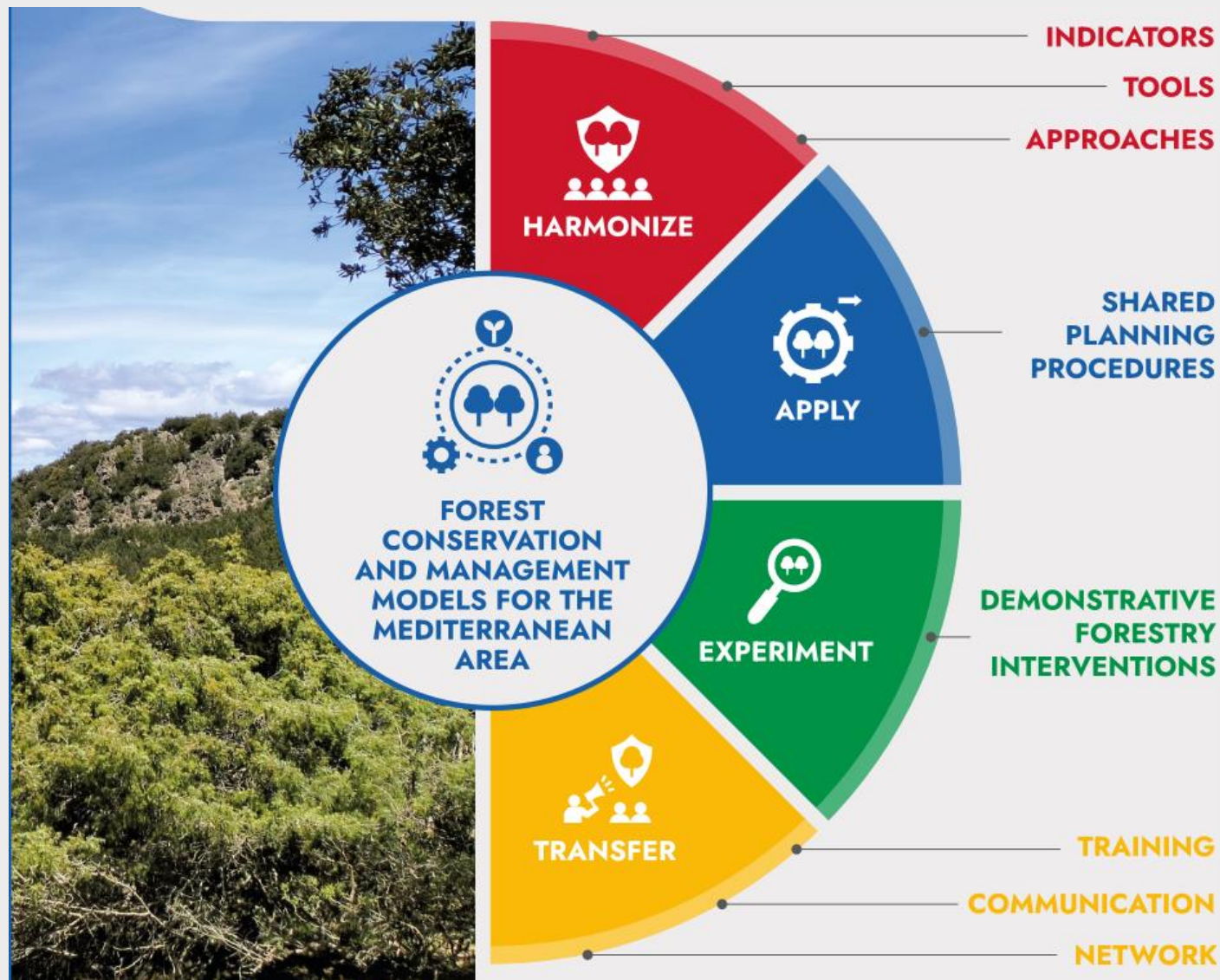


The integrative approach that the project will apply and test is in line with the European 2030 strategy for forests



LIST OF EXAMPLES OF RESTORATION MEASURES (10) Increase ecological features in forests, such as large, old and dying trees (habitat trees) and amounts of lying and standing deadwood.

LIFE GoProFor MED - Key action lines of the project



PROJECT LOCATIONS



4

MEDITERRANEAN COUNTRIES

Spain
France
Italy
Greece

12

PROJECT'S AREAS

- 2 Sardinia (IT)
- 2 Tuscany (IT)
- 4 Catalonia (ES)
- 3 Provence-Alpes-Côte d'Azur (FR)
- 1 Thessaloniki (GR)

NATURA 2000 SITES

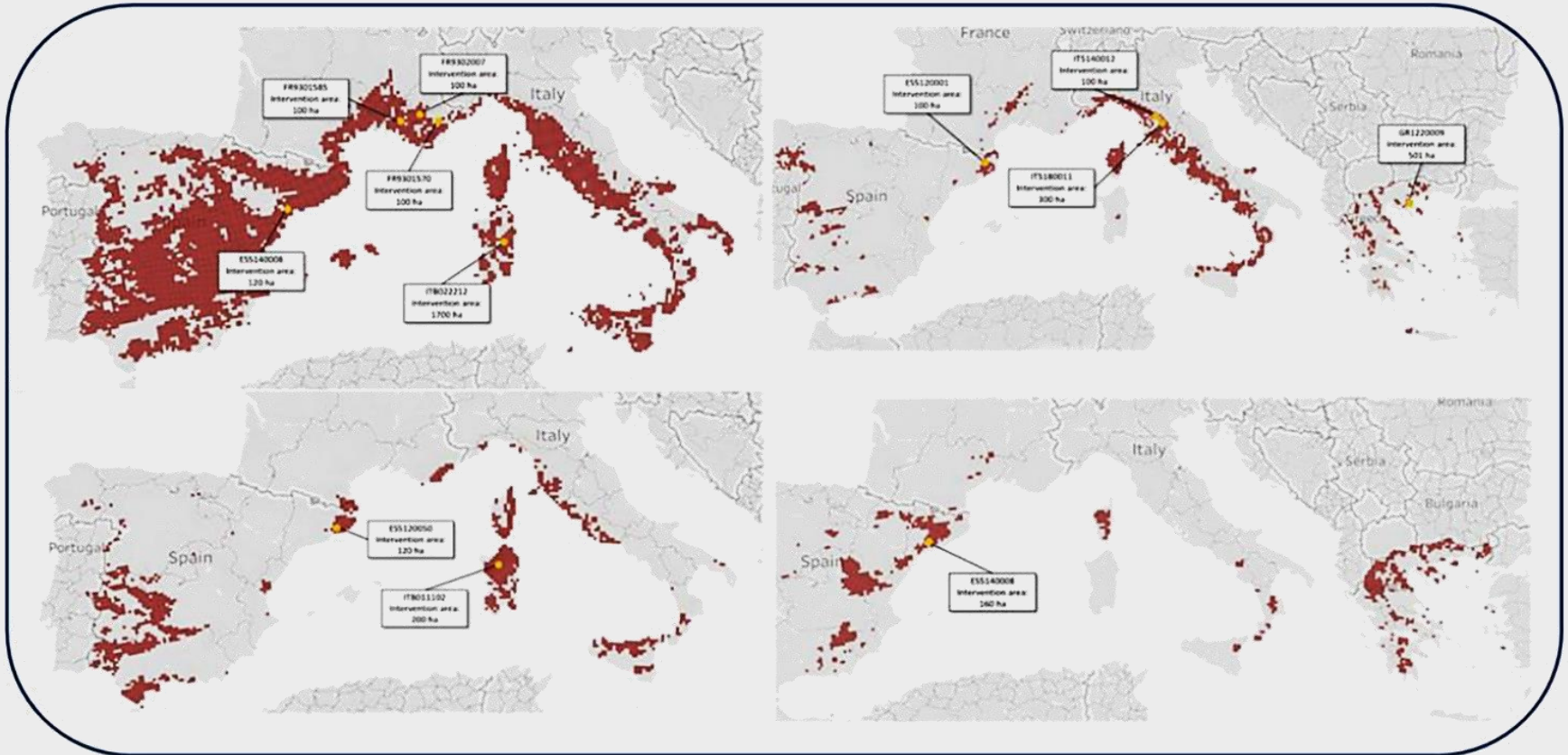
HABITAT

1	ES5140008 - Muntanyes de Prades	foresta di Plans i baridana	9530*
2	ES5140008 - Muntanyes de Prades	foresta di Poblet	9340
3	ES5120001 - Alta Garrotxa-Massís de les Alberes, foresta di Muntanya de les salines, fucimanya i balló		9260
4	ES5120015 - Litoral del Baix Empordà, foresta di Paratge i pla de castell		9330
5	FR9301585- Massif du Luberon		9340
6	FR9302007 - Valensole		9340
7	FR9301570 - Préalpes de Grasse		9340
8	ITB011102 - Catena del Marghine e del Goceano		9330
9	ITB022212 - Supramonte di Oliena, Orgosolo e Urzulei - Su Sercone		9340
10	IT5140012- Vallombrosa e Bosco di S. Antonio		9260
11	IT5180011- Pascoli montani e cespuglieti del Pratomagno		9260
12	GR1220009 - Limnes Koroneias - Volvis, Stena Rentinas Kai Evryteri Periochi		9260

TARGET FOREST HABITATS

9340 – *Q. ilex* and *Q. rotundifolia* forests

9260 - Chestnuts



9330 - *Quercus suber* forests

9530* - (Sub-)Mediterranean pine forests

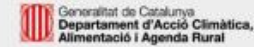
www.lifegoproformed.eu

Improvement of the conservation status of forest habitats in the Mediterranean Biogeographical Region applying restoration and conservation techniques and Close to Nature management

Coordinator



Partners



Affiliated entities



DURATION: 01/09/22- 31/08/28

BUDGET INFO:

Total amount: 4 797 797,44 €

% EC Co-funding: 60% (2 878 672,20 €)